

Tuel Lane Infant School Child Protection Policy and Procedures

2016-17

Contents

Introduction

Section 1 – Pupil information

- 1.1 Pupil Information
- 1.2 Transfer of files

Section 2 – Role and Responsibilities

- 2.1 Governing Body
- 2.2 Head teacher
- 2.3 Designated Safeguarding lead
- 2.4 All Staff and Volunteers

Section 3 - Child Protection Procedures

- 3.1 Definitions
- 3.2 Concerns that staff must immediately report
- 3.3 Responding to disclosure
- 3.4 Action by the Designated Safeguarding lead
- 3.5 Action following a child protection referral
- 3.6 Recording and monitoring

Appendices

- Appendix 1 Example Record of Concern Form
- Appendix 2 Referral flowchart

Introduction

This policy is a statement of the aims, principles and strategies for dealing with all matters relating to safeguarding children. Our policy applies to all staff, governors and volunteers working in the school.

The main elements of our policy:

- Establishing a safe environment for all our children
- Working in partnership with parents and carers, being clear about what they can expect from the school and what is expected from them, including information on parental responsibility, accessing pupil records and information on dealing with concerns and complaints about the school.
- Ensuring we provide a safe environment for all pupils through robust recruitment and training of staff and volunteers who work with and have contact with children within the school.
- Raising awareness of child protection issues through staff training and teaching that equips children and adults with the skills needed to keep them safe.
- Implementing L A and procedures to identify and report cases of, or suspected cases, of abuse.
- Supporting pupils who have been abused in accordance with their agreed multi-agency Child Protection Plan and to participate in the planning and review framework for Child Protection.

Therefore the aim of this Policy is to:

- To ensure all staff are aware of their roles and responsibility to safeguard the welfare of children and provide a framework for them to report anything that might indicate that a child is at risk of or suffering significant harm.
- To inform all staff of the name of the Designated Safeguarding Lead (Judy Shaw)
- To provide information to parents (through this document being available in full to parents) of our roles and duties to safeguard children.

Our policy and procedures have been written with regard and reference to key legislation:

Children Act 1989

Children Act 2004

Education Act 2002 Section 175

Working together to Safeguard Children 2013

Keeping Children Safe in Education 2014

Procedures

The aims of these procedures are:

- To establish clear definitions of abuse
- To clarify roles and responsibilities of everyone within our school in relation to safeguarding
- To have clear procedures that are followed when a child is identified as needing more than universal services can provide

Section 1 – Pupil Information

1.0 Our school will endeavour to keep up to date and accurate information in order to keep children safe and provide appropriate care for them the school requires accurate and up to date information regarding:

- names and contact details of persons with whom the child normally lives
- names and contact details of all persons with parental responsibility (if different from above)

- emergency contact details (if different from above), ensuring that should the person(s) with parental responsibility be unable to collect this person could collect the child and keep them safe until either the person(s) with parental responsibility is available or a more suitable arrangement is made
- details of any persons authorised to collect the child from school (if different from above)
- any relevant court orders in place including those which affect any person's access to the child (e.g. Residence Order, Contact Order, Care Order, Injunctions etc.)
- if the child is or has been subject to a Child Protection Plan
- if the child is or has been subject to Common Assessment Framework (CAF) or Child In Need (CIN) processes.
- name and contact detail of G.P.
- any other factors which may impact on the safety and welfare of the child

The school will collate, store and agree access to this information, ensuring all information held electronically is stored securely with due regard to meeting data protection and safeguarding requirements.

1.2 When a child leaves the school their child protection file is copied for any new school as soon as possible and transferred separately from the main pupil file. This is usually done by hand unless the child moves out of area, if this is the case the file is transferred by recorded delivery and signed for, and is clearly marked confidential. A receipt is retained with the copied file so it is clear where they file has been transferred to.

Section 2 - Roles and Responsibilities

2.1 Our Governing Body will ensure that:

- the school has an effective child protection policy and procedures in place that are in accordance with local authority guidance and locally agreed inter-agency procedures, and the policy is available publicly via the school website or other means
- the school has a staff code of conduct and that this is provided to all staff on induction
- the school operates safer recruitment procedures and makes sure that all appropriate checks are carried out on staff and volunteers who work with children; and that any panel involved in the recruitment of staff has at least one member who has undertaken the Safer Recruitment Training.
- the school has procedures for dealing with allegations against staff and volunteers that comply with guidance from the local authority and locally agreed inter-agency procedures.
- e-safety policy and procedures are in place and training and support is provided for staff and pupils to ensure that there is a good understanding of child protection issues related to electronic media.
- a senior member of the school's leadership team is appointed to the role of DSL, (Designated Safeguarding Lead)
- staff including the Head teacher undertake appropriate child protection training which is updated regularly
- they remedy, without delay, any deficiencies or weaknesses regarding child protection arrangements;
- a governor is nominated to be responsible for liaising with the LA and /or partner agencies in the event of allegations of abuse being made against the head teacher
- where services or activities are provided on the school premises by another body, the body concerned has appropriate policies and procedures in place in regard to safeguarding children and child protection and liaises with the school on these matters where appropriate.
- they review their policies and procedures annually

2.2 Our Head Teacher will ensure that:

- the policies and procedures adopted by the Governing Body or Proprietor are fully implemented, and followed by all staff;
- sufficient resources and time are allocated to enable the designated person and other staff to discharge their responsibilities including taking part in strategy discussions and other inter-agency meetings and contributing to the assessments of children.
- all staff and volunteers feel able to raise concerns about poor or unsafe practice in regard to children, and such concerns are addressed sensitively and effectively in a timely manner in accordance with agreed whistle blowing policies.
- All allegations against staff are referred to the Local Authority Designated Officer (LADO);

2.3 Our Designated Safeguarding Lead (DSL) will:

Managing referrals

- Refer all cases of suspected abuse to the local authority children's social care and:
- Police (cases where a crime may have been committed).
- Liaise with the headteacher (if different) to inform her of issues especially ongoing enquiries under section 47 of the Children Act 1989 and police investigations
- Act as a source of support, advice and expertise to staff on matters of safety and safeguarding and when deciding whether to make a referral by liaising with relevant agencies

Training

- The designated safeguarding lead will attend appropriate training carried out every two years in order to:
 - Understand the assessment process for providing early help and intervention, for example through locally agreed common and shared assessment processes such as early help assessments
 - Have a working knowledge of how local authorities conduct a child protection case conference and a child protection review conference and be able to attend and contribute to these effectively when required to do so
- Ensure each member of staff has access to and understands the school's or college's child protection policy and procedures, especially new and part time staff
- Be alert to the specific needs of children in need,
- Be able to keep detailed, accurate, secure written records of concerns and referrals
- Encourage a culture of listening to children and taking account of their wishes and feelings, among all staff, in any measures the school or college may put in place to protect them

Raising Awareness

- The designated safeguarding lead will ensure that the school's policies are known and used appropriately:
- Ensure the school's safeguarding and child protection policy is reviewed annually and the procedures and implementation are updated and reviewed regularly, and work with governing bodies or proprietors regarding this
- Ensure the child protection policy is available publicly and parents are aware of the fact that referrals about suspected abuse or neglect may be made and the role of the school in this
- Link with the local LSCB (Local Safeguarding Children's Board) to make sure staff are aware of training opportunities and the latest local policies on safeguarding
- Where children leave the school or college ensure their child protection file is copied for any new school as soon as possible but transferred separately from the main pupil file

2.4 All staff and volunteers will:

- fully comply with the school's policies and procedures
- read Part I of 'Keeping Children Safe in Education' (2014)
- attend annual whole school training and other appropriate training identified
- identify concerns as early as possible and provide help, to prevent concerns from escalating and identify children who may be in need of extra help or who are suffering or are likely to suffer significant harm
- provide a safe environment in which children can learn
- be aware that they may be asked to support a Social Worker to take decisions about individual children
- inform the designated safeguarding lead of any concerns

Section 3 – Child Protection Procedures

3.1 Teachers and other adults in school are well placed to observe any physical, emotional or behavioural signs which indicate that a child may be suffering significant harm. The relationships between staff, pupils, parents and the public which foster respect, confidence and trust can lead to disclosures of abuse, and/or school staff being alerted to concerns.

Definitions:

(‘Working Together’ 2013 and ‘Keeping Children Safe in Education’ 2016)

A child: As in the Children Act of 1989 and 2004, a child is anyone who has not yet reached his/her 18th birthday or in the case of disabled children 25 years.

Harm means ill-treatment or impairment of health and development, including, for example, impairment suffered from seeing or hearing the ill-treatment of another;

Development means physical, intellectual, emotional, social or behavioural development;

Health includes physical and mental health; maltreatment includes sexual abuse and other forms of ill-treatment which are not physical.

Abuse: a form of maltreatment of a child. Somebody may abuse or neglect a child by inflicting harm, or by failing to act to prevent harm. They may be abused by an adult or adults or another child or children.

Physical abuse: a form of abuse which may involve hitting, shaking, throwing, poisoning, burning or scalding, drowning, suffocating or otherwise causing physical harm to a child. Physical harm may also be caused when a parent or carer fabricates the symptoms of, or deliberately induces, illness in a child.

Emotional abuse: the persistent emotional maltreatment of a child such as to cause severe and adverse effects on the child's emotional development. It may involve conveying to a child that they are worthless or unloved, inadequate, or valued only insofar as they meet the needs of another person. It may include not giving the child opportunities to express their views, deliberately silencing them or 'making fun' of what they say or how they communicate. It may feature age or developmentally inappropriate expectations being imposed on children. These may include interactions that are beyond a child's developmental capability as well as overprotection and limitation of exploration and learning, or preventing the child participating in normal social interaction. It may involve seeing or hearing the ill-treatment of another. It may involve serious bullying (including cyberbullying), causing children frequently to feel frightened or in danger, or the exploitation or corruption of children. Some level of emotional abuse is involved in all types of maltreatment of a child, although it may occur alone.

Sexual abuse: involves forcing or enticing a child or young person to take part in sexual activities, not necessarily involving a high level of violence, whether or not the child is aware of what is happening. The activities may involve physical contact, including assault by penetration (for example rape or oral sex) or non-penetrative acts such as masturbation, kissing, rubbing and touching outside of clothing. They may also include non-contact activities, such as involving children in looking at, or in the production of, sexual images, watching sexual activities, encouraging children to behave in sexually inappropriate ways, or grooming a child in preparation for abuse (including via the internet). Sexual abuse is not solely perpetrated by adult males. Women can also commit acts of sexual abuse, as can other children.

Neglect: the persistent failure to meet a child's basic physical and/or psychological needs, likely to result in the serious impairment of the child's health or development. Neglect may occur during pregnancy as a result of maternal substance abuse. Once a child is born, neglect may involve a parent or carer failing to: provide adequate food, clothing and shelter (including exclusion from home or abandonment); protect a child from physical and emotional harm or danger; ensure adequate supervision (including the use of inadequate caregivers); or ensure access to appropriate medical care or treatment. It may also include neglect of, or unresponsiveness to, a child's basic emotional needs.

3.2 It is **not** the responsibility of the school staff to investigate welfare concerns or determine the truth of any disclosure or allegation. All members of staff however, have a duty to recognise concerns and maintain an open mind. Accordingly all concerns regarding the welfare of pupils will be recorded and discussed with the designated safeguarding lead (or the deputy DSL in the absence of the DSL) prior to any discussion with parents.

Concerns that staff must immediately report:

- any suspicion that a child is injured, marked, or bruised in a way which is not readily attributable to the normal knocks or scrapes received in play
- any explanation given which appears inconsistent or suspicious
- any behaviours which give rise to suspicions that a child may have suffered harm (e.g. worrying drawings or play)
- any concerns that a child may be suffering from inadequate care, ill treatment, or emotional maltreatment
- any concerns that a child is presenting signs or symptoms of abuse or neglect
- any significant changes in a child's presentation, including non-attendance
- any hint or disclosure of abuse from any person
- any concerns regarding person(s) who may pose a risk to children (e.g. living in a household with children present)

3.3 Responding to Disclosure

Disclosures or information may be received from pupils, parents or other members of the public. School recognises that those who disclose such information may do so with difficulty, having chosen carefully to whom they will speak. Accordingly all staff will handle disclosures with sensitivity appropriate to the needs of young children.

Such information cannot remain confidential and staff will immediately communicate what they have been told to the designated safeguarding lead and make a contemporaneous record.

Principles:

Staff will not investigate but will, wherever possible, elicit enough information to pass on to the designated safeguarding lead in order that s/he can make an informed decision of what to do next.

Staff will:

- listen to and take seriously any disclosure or information that a child may be at risk of harm
- try to ensure that the person disclosing does not have to speak to another member of school staff
- clarify the information
- try to keep questions to a minimum and of an 'open' nature e.g. using TED technique – 'Tell me, Explain to me, Describe to me....'
- try not to show signs of shock, horror or surprise
- not express feelings or judgements regarding any person alleged to have harmed the child
- explain sensitively to the person that they have a responsibility to refer the information to the designated safeguarding lead, children need to know that staff may not be able to uphold confidentiality where they are concerned about their safety or someone else's
- reassure and support the person as far as possible
- explain that only those who 'need to know' will be told
- explain what will happen next and who will be involved as appropriate
- record details including what the child has said, in the child's words on a 'Record of Concern'/'Cause for Concern' form (Example in Appendix 2)
- record the context and content of their involvement, and will distinguish between fact and opinion

3.4 Action by the Designated Safeguarding Lead (or deputy DSL in their absence)

Following any information raising concern, the designated safeguarding lead will consider:

- any urgent medical needs of the child
- whether the child is subject to a child protection plan
- discussing the matter with other agencies involved with the family
- consulting with appropriate persons e.g. Multi-Agency Screening Team (MAST) and/or Safeguarding Advisor for Education
- the child's wishes

Then decide:

- to talk to parents, unless to do so may place a child at risk of significant harm, impede any police investigation and/or place the member of staff or others at risk
 - whether to make a child protection referral to Multi-Agency Screening Team (MAST) because a child is suffering or is likely to suffer significant harm and if this needs to be undertaken immediately
- OR**
- not to make a referral at this stage
 - if further monitoring is necessary
 - if it would be appropriate to undertake an assessment (e.g. CAF) and/or make a referral for other services.

All information and actions taken, including the reasons for any decisions made, will be fully documented and the process depicted in the flowchart in Appendix 4 will be followed. All referrals to Multi-Agency Screening Team (MAST) will be followed up in writing using the Calderdale Request for Service/Referral Form.

3.5 Action following a child protection referral

The designated safeguarding lead or other appropriate member of staff will:

- make regular contact with the social worker involved to stay informed
- wherever possible, contribute to the strategy discussion
- provide a report for, attend and contribute to any subsequent child protection conference
- if the child or children are made the subject of a child protection plan, contribute to the child protection plan and attend core group meetings and review conferences
- where possible, share all reports with parents prior to meetings
- where in disagreement with a decision made by Multi-Agency Screening Team (MAST) e.g. not to apply child protection procedures or not to convene a child protection conference, follow the guidance in the West Yorkshire Consortium Safeguarding Children Procedures 8.2 Resolving Professional Disagreements
- where a child subject to a child protection plan moves from the school or goes missing, immediately inform Multi-Agency Screening Team (MAST)

3.6 Recording and monitoring

Accurate records will be made as soon as practicable and will clearly distinguish between observation, fact, opinion and hypothesis. All records will be signed and dated, any information given will be recorded verbatim where possible and a note made of the location and description of any injuries seen. These are done on the school's 'Record of Concern'/'Cause for Concern' form (example in Appendix 2).

All documents will be retained in a 'Child Protection file', separate from the child's school file. This will be locked away and only accessible to the head teacher and designated safeguarding lead. These records will be transferred to any school or setting the child moves to, clearly marked 'Child Protection, Confidential, for attention of Designated Safeguarding Lead for Child Protection.' A copy will then be retained by the school until the child's 25th birthday.

If the child goes missing from education or is removed from roll to be educated at home then any child protection file should be copied and the copy sent to the Education Welfare Service.

Headteacher Judy Shaw	07890 535572
Chair of Governors Mike Imeson	01422 831221
DSL Judy Shaw	01422 831221
Deputy DSL Jane Clayton, Lorraine Rose	01422 831221
Safeguarding Governor Mike Imeson	
SENCo Judy Shaw	01422 831221
Safer Recruitment Training: Judy Shaw DSL Mike Imeson LA Governor Lindsay Hibbert Staff Governor and School Administrator Sue Whitley, Community Governor	
MAST (Multi Agency Screening Team)	01422 393336
LA Advisor Rezina Kelly	rezina.kelly@calderdale.gov.uk 01422 394086
Education Welfare Officer: Claire Priestley	01422 266122
LADO Local Authority Designated Officer Keith Watson (The LADO should be consulted where it is alleged that a person working with children (including volunteers) has: Behaved in a way that has harmed or may have harmed a child Possibly committed a criminal offence against a child Behaved in a way that indicates they may pose a risk of harm if they worked regularly or closely with children	keith.watson@calderdale.gov.uk 01422 394086

Appendix I

Child Protection
Cause for Concern Form

Date:		Time:	
Name of Child:			
Date of Birth:		UPN Number:	
Reporting Adult:		Role:	
Reporting Adult Signature:		DSL Signature:	

Details of Concern (who, what, where, when):

Facts -

Opinions -

DSL Follow up:

MAST Contacted for advice:

Yes/No

MAST Referral:

Yes/No

Time of contact:

Outcome of contact:

Child's CASS Number:

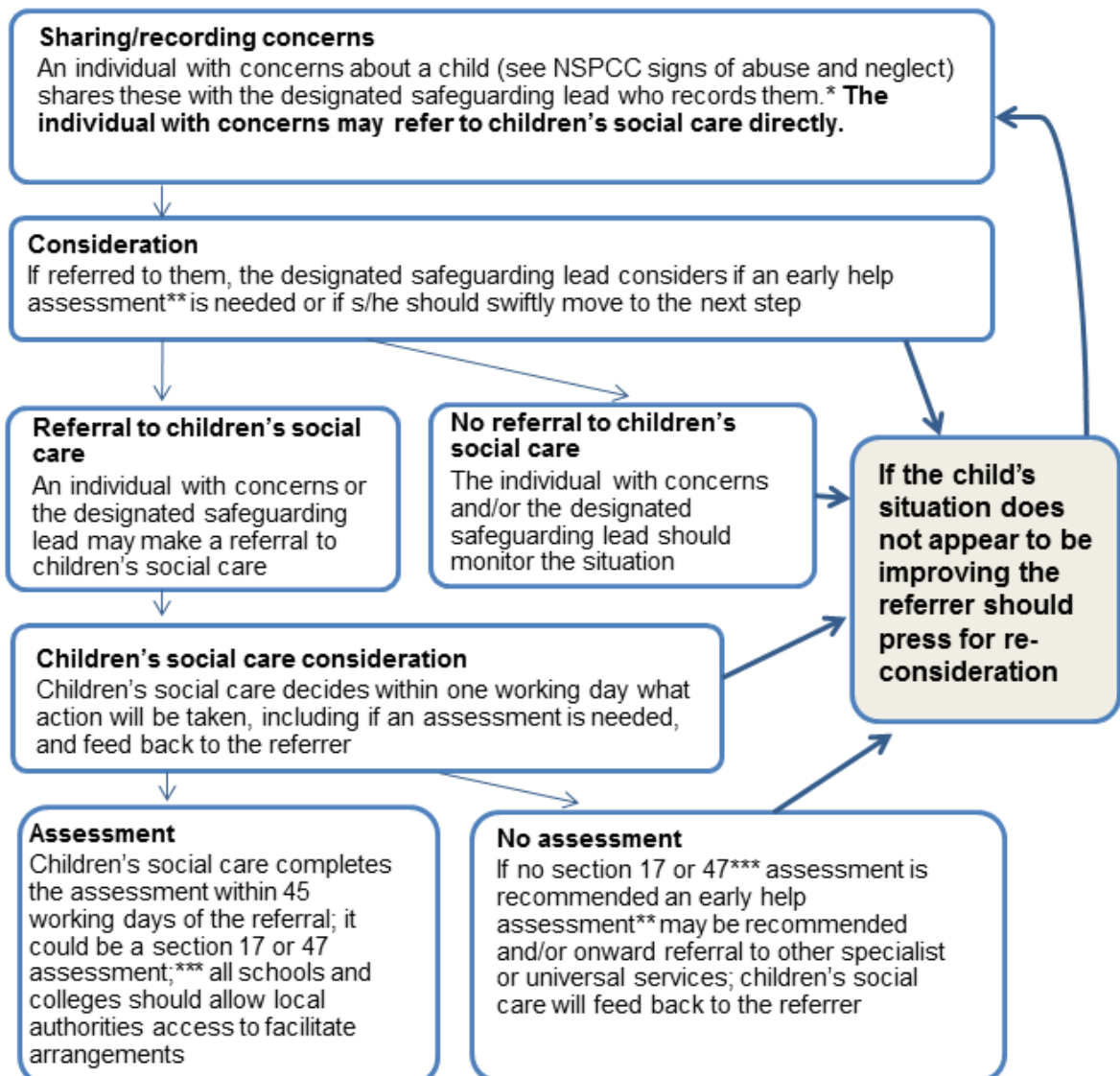
Actions:

Review Date:

Action when a child has suffered or is likely to suffer harm

This diagram illustrates what action should be taken and who should take it when there are concerns about a child. If, at any point, there is a risk of immediate serious harm to a child a referral should be made to children's social care immediately.

Anybody can make a referral.



* In cases which also involve an allegation of abuse against a staff member, see part four of this guidance which explains action the school or college should take in respect of the staff member

** Where a child and family would benefit from coordinated support from more than one agency (eg, education, health, housing, police) there should be an inter-agency assessment. These assessments should identify what help the child and family require to prevent needs escalating to a point where intervention would be needed via a statutory assessment under the Children Act 1989. The early help assessment should be undertaken by a lead professional who could be a teacher, special educational needs coordinator, General Practitioner (GP), family support worker, and/or health visitor.

*** Where there are more complex needs, help may be provided under section 17 of the Children Act 1989 (children in need). Where there are child protection concerns local authority services must make enquiries and decide if any action must be taken under section 47 of the Children Act 1989.